

# CHCP Lower Limb Compression Formulary

## City Health Care Partnership CIC

## Contents

Introduction	3
Assessment	4
Compression	5
Maintenance & Prevention	6
Compression Hosiery – Hosiery Kits	7
Compression Bandages	8
Compression Bandages Continued	9
Compression Bandages Continued	10
Compression Bandaging Accessories – Toe Caps	11
Compression Hosiery - RAL Standard	12
Compression Hosiery - RAL Standard – Custom-fit	15
Compression Hosiery - British Standard	16
Compression Wraps	17
Lymphoedema Specialist Options	18
Hosiery Donning Aids	19
JOBST® UlcerCare™ Liners and Kits Chart	20
Immediate and necessary care pre-doppler pathway	21
Post-doppler treatment pathway	22
Maintenance & Prevention pathway	23

# Introduction

The compression formulary for the management of venous leg ulcer and oedema has been formulated by the Tissue Viability Service with the advice and support of the Lymphoedema Service.\*

With over 700,000 people in the UK estimated as having leg ulceration and the documented annual cost of its management being a staggering £1.94 billion (Guest et al, 2015; 2018), its impact on NHS resources is significant. As leg ulcer management is currently estimated to account for at least 1.3% of the healthcare budget in the UK, it is essential that clinicians adhere to best practice to achieve optimal outcomes.

## Key Messages

The clinician managing the leg ulcer should:

- Have a clear rationale to underpin dressing selection
- Be aware of the total cost of the dressing regimen
- Minimise unnecessary dressing changes
- Promote shared and self-care

## Aims

Promoting evidence-based practice in leg ulcer management for patients

Guide practitioners in appropriate dressing choice

Standardisation of appropriate practice

Cost effectiveness (Drug tariff prices correct on July 2021. Individual prescribers should be aware of price changes when possible)

Best Practice Statement: Holistic Management of Venous Leg Ulcers (Wounds UK, 2016)

## Factors to consider when selecting compression hosiery:

- Size and shape of limb,
- Limb distortion,
- Patients ability to self-care, including dexterity

This formulary has been separated into different sections. This will enable staff to make the correct choices when managing patients with venous leg ulcers, chronic oedema, lymphoedema with a wound, Lymphoedema without a wound or a palliative patient requiring compression. Please choose the correct system for the patient and follow the appropriate care pathway contained in this formulary. Where a satisfactory outcome is not achieved practitioners should discuss care with Tissue Viability or Lymphoedema Specialist Services. Following this, other products may be recommended based on a clear rationale and evidence base.

**Please remember**, selecting products outside of this formulary must be justified by a specific patient need and only undertaken by the Tissue Viability Service.

\*References for best practice

National Wound Care Strategy Program

Best Practice Statement Compression hosiery: A patient-centric approach (Wounds, 2021)

Best Practice in the Community, Chronic Oedema (JCN, GPN, 2019)

# Assessment

On first presentation, please consider the following RED FLAG assessment prior to the provision of immediate and necessary care:

- Acute infection of leg or foot (i.e. increasing unilateral redness, swelling, pain, pus, heat)
- Symptoms of sepsis
- Acute or chronic limb ischaemia
- Suspected acute deep vein thrombosis
- Suspected skin cancer

If any red flags present, please escalate immediately to lower limb first assessment pathway team.

Following the provision of immediate and necessary care, it is important to follow up with a holistic assessment within 14 days. This assessment must include an Ankle Brachial Pressure Index (ABPI). The ABPI (doppler) test should be used as a guide to assess the presence of significant peripheral arterial disease but should only be an adjunct to clinical assessment, when selecting suitable compression therapy.

A vascular assessment helps eliminate the risk of arterial disease. When completing a full assessment, you should consider the following - is there any:

- Muscle pain on mild exertion, such as walking, and is relieved by a short period of rest
- Sense of fatigue in the calf muscle which occurs during exercise
- Calf – Foot/great toe rest pain
- Inability to lie in bed and need to hang leg out/sleeping in chair
- Motor – sensory deficit
- Numbness/neuropathy
- Colour changes e.g. white, pale, dusky especially on elevation
- Skin changes e.g. toe ulceration
- Nails – hair changes e.g. atrophic nail changes
- Pulselessness
- Delayed capillary refill
- Temperature gradient in limb e.g. cooler at extremities?

If any one or more of these is present, arterial insufficiency should be excluded by measuring the ankle-brachial pressure index (ABPI). A referral for further test to the vascular department is recommended. Refer to pathways within this document.

# Compression

Compression therapy is the cornerstone for treating patients with venous leg ulcer, chronic oedema and lymphoedema. It acts on the venous and lymphatic systems to improve venous and lymphatic return and reduce oedema.

Compression systems are:

- Compression hosiery kits
- Compression bandages (short stretch and long stretch)
- Compression hosiery
- Circular-knit
- Flat-knit
- Compression wrap systems

## Short stretch & long stretch compression bandages

Compression bandages can be applied in combinations to achieve Full Strength (40mmHg) or Reduced Strength (up to 20mmHg) compression.

**Long stretch:** Multi-layer compression bandaging systems apply sustained graduated compression for the management of venous leg ulcers and associated conditions.

**Short stretch:** Short-stretch bandages are applied at full stretch and create a firm 'tube-like' structure around the calf. When the calf muscle contracts it rebounds against the walls of the firm tube and this pressure causes the blood in the deep veins to progress towards the heart. The firmness of the tube discourages the backflow of blood that causes hypertension, thereby reducing ankle oedema (Hawkins, 2001). Short-stretch bandaging has a low resting pressure, with only temporary high levels of compression present when the patient is active.

## Circular-knit vs flat-knit compression hosiery:

**Circular-knit:** Due to its high elastic nature it is most suitable for limbs of a regular shape. It is suitable where there is no or minimal limb distortion. Readily available in 'off the shelf' sizes.

**Flat-knit:** More suitable for limbs with irregular / distorted shape. Have high level of static stiffness therefore will contain oedema more efficiently than a circular knit. The fabric tends to be relatively thick and stiff, which lets it lie across skin folds without cutting into the skin. Made to measure garments allow for more accurate and comfortable fit.

## Compression wrap systems

Wrap systems are an adjustable short-stretch compression wrap system designed for treating patients with lymphatic and venous conditions.

JOBST® FarrowWrap® simulates short stretch bandaging, providing graduated compression. Designed for the treatment of swelling and ulceration of the limb, including chronic oedema and chronic venous insufficiency. It is a practical alternative to bandaging.

# Maintenance & Prevention

RAL (German Standard: RAL-GZ 387\*)

British Standard (BS 6612)

British Standard		RAL	
Class 1	14 - 17mmHg	Class 1	18-21 mmHg
Class 2	18 - 24mmHg	Class 2	23- 32 mmHg
Class 3	25 - 35mmHg	Class 3	34-46 mmHg

## Compression Hosiery issuing guidelines

Patients should be prescribed 2 garments, per leg. One garment to wash and one garment to wear. (i.e. if a patient has compression hosiery on both legs, they will need 4 garments every 6 months).

**Please note that patients who pay an NHS prescription charge for their hosiery will be charged at the current NHS prescription charge.**

- RAL Standard (JOBST) garments are guaranteed for 6 months:
- Garments should be replaced every 6 months.
- i.e. if a patient has hosiery on both legs, they will need a maximum of 8 garments in 12 months\*\*
- British Standard (Credalast) garments are guaranteed for 3 months
- Garments should be replaced every 3 months
- i.e. if a patient has hosiery on both legs, they will need a maximum of 16 garments in 12 months\*\*

**\*\*Please be aware patient's limb shape may change over time and they will need to be remeasured accordingly. If the hosiery becomes too tight or too loose, it will need to be replaced. If a patient's limb measurements do not fit with the regular size garments, made to measure service is available.**

# Compression Hosiery – Hosiery Kits

**Compression hosiery kits should always be considered as a first line option for treating patients with venous leg ulceration**

Compression hosiery kits should always be considered as a first line option for treating patients with venous leg ulceration.

**Complete holistic leg ulcer assessment including Doppler prior to application.**

Risk factors to consider include: ABPI results, indicating arterial disease, intermittent claudication, pain at rest, capillary refill, warmth of feet, cardiac disease and diabetes. See venous leg ulcer guidelines.

Product Category	Product Name	Sizes	Costs	Use	Precautions / Contraindications
Compression Hosiery – Hosiery Kits For Regular limb shape: no oedema	JOBST® UlcerCare™ Replacement Liners  (Pack of 3 Liners) 15-20mmHg	Small – 4XLarge	£19.84	<p><b>Immediate and necessary care</b> <b>0.51-0.79 Mixed aetiology ABPI</b></p> <p>The JOBST® UlcerCare™ Compression Liner, as well as holding the wound dressing in place, provides mild compression and can be worn for 24 hours per day.</p>	<p><b>ABPI Less than 0.8 &amp; more than 1.3</b> Should be used with extreme caution and applied only after specialist referral and under strict supervision.</p> <ul style="list-style-type: none"> <li>• Diabetic patients - unless after specialist referral and under strict supervision</li> <li>• Significant arterial disease (ischaemia) according to vascular assessment</li> <li>• Congestive cardiac failure as compression could lead to cardiac overload</li> <li>• Renal failure</li> </ul> <p><b>Other Considerations</b></p> <ul style="list-style-type: none"> <li>• Known sensitivity to the fabric of the stockings</li> <li>• This system may be unsuitable where there is heavy exudate</li> <li>• For distorted or irregular shaped limbs, it may be more appropriate to use compression bandages</li> <li>• Padding and bandages are recommended for patients with very small limbs or with bony prominences</li> </ul>
	JOBST® UlcerCare™ Hosiery Kit 40mmHg  1 x Stocking 2 x Liners (15-20mmHg)	Small – 4XLarge	£32.85	<p><b>ABPI 0.8 - 1.3</b></p> <p>JOBST® UlcerCare™ consists of two components, a medical stocking and a compression liner.</p> <p>Together these provide a gradient compression of 40mmHg at the ankle.</p> <p>It is designed for patient's self-management and allows for improved personal hygiene and minimum disruption to patient's lifestyle, e.g., functional with normal footwear and clothing.</p>	

# Compression Bandages

Only consider bandages when not appropriate to use compression hosiery kits.

For treatment venous leg ulceration and oedema reduction

In the absence of significant arterial disease below-knee compression graduated from toe to knee, in the form of bandaging, is a key component for treatment of venous leg ulceration, chronic oedema or lymphoedema. Please refer to pathways at the end of this document when assessing patients and selecting the most appropriate compression product.

Product Category	Product Name	Sizes	Costs	Use	Precautions / Contraindications
Regular limb shape - no or mild oedema	K-Soft	10cmx3.5cm 10cmx4.5cm	£0.47p £0.59p	An absorbent, non-woven, sub-bandage wadding comprising a blend of viscose and polyester. Latex-free.  Used to reduce the effect of compression bandages and orthopaedic casting materials on the skin. May also be used to reshape the leg around the calf or ankle, to ensure correct pressures are achieved when applying four-layer compression, and to protect the bony prominences.	Compression bandage systems are not recommended for patients with arterial disease (ABPI <0.8) without specialist intervention from tissue viability or vascular..
	K-Lite	10cmx4.5m; 10cmx5.25m (long)	£1.04; £1.19	Lightweight knitted bandage consisting of viscose, nylon and elastomeric yarn. K-Lite is the second layer of the K-Four multilayer compression bandage kit. Latex free. Provides type 2 light support. Designed for use on sprains and strains, and for the prevention of oedema.	Known allergy to any of the components.  Not suitable for application of pressure on its own, and so should be used in combination with other bandages in the treatment of venous leg ulcers.
	K-Plus	10cmx8.7cm stretched  10cmx10.25cm Stretched (long)	£2.37 £2.74	White knitted fabric consisting of viscose, nylon and elastomeric yarn. A light-blue line runs along the middle of its length to aid 50% overlap when bandaging. Also available in long length. Latex-free  A type 3a light compression bandage. It is a highly extensible elastic bandage and donates up to 20mmHg of sub-bandage pressure at the ankle. It is the third layer in the K-Four multilayer compression system for venous leg ulcers.	Compression bandage systems are not recommended for patients with arterial disease (ABPI <0.8).
	Ko-Flex	10cmx6m 10cmx7m	£3.15 £3.60	Ko-Flex is the fourth and top layer of the K-Four multilayer compression bandaging system. It has a retention function, while also providing compression of up to 20mmHg on a 18–25cm circumference ankle. It can also be used to apply light pressure support to limbs in the management of sprains and strains, or during rehabilitation following orthopaedic surgery.	Compression bandage systems are not recommended for patients with arterial disease (ABPI <0.8). Contains natural latex.
	K-ThreeC	10cmx3m (unstretched)	£2.95	A lightweight knitted compression fabric composed of viscose, elastane and nylon. The bandage has two-way stretch. Latex-free.  Type 3c high compression bandage. Provides 25–35mmHg and is a component of the K-Four 25–30cm and 30cm+ kits, delivering the recommended pressure of 40mmHg when applied to larger ankles.	Compression bandage systems are not recommended for patients with arterial disease (ABPI <0.8).



# Compression Bandages Continued

Only consider bandages when not appropriate to use compression hosiery kits.

For treatment venous leg ulceration and oedema reduction

In the absence of significant arterial disease below-knee compression graduated from toe to knee, in the form of bandaging, is a key component for treatment of venous leg ulceration, chronic oedema or lymphoedema. Ensure appropriate pathways are followed when assessing patients and selecting the most appropriate compression product.

Product Category	Product Name	Sizes	Costs	Use	Precautions / Contraindications
Distorted limb shape - mild to severe oedema	Actico™ (Cohesive)	8cm x 6m	£3.34	Inelastic cohesive compression bandages for the treatment and management of venous leg ulcers, lymphoedema and chronic oedema. Therapeutic working and tolerable resting pressure provides effective ulcer healing and oedema control. Cohesive quality of the bandage allows for extended wear time, without slippage, for up to seven days.  The 'Safe-Loc™' system enables consistent and accurate application.	ABPI <0.8 -Actico™ compression therapy should only be used under strict medical or vascular specialist supervision. If ABPI is >1.3 further investigation is to be required before Actico™ is applied (refer to local guidelines).  Not suitable for ankle circumference of less than 18cm unless padding is used to increase the ankle circumference to 18cm or more.
		10cm x 6m	£3.47		
		12cm x 6m	£4.43		
	Comprilan bandages	10cm x 5m	£3.55	100% cotton short-stretch compression bandage. INDICATIONS Varicosis; chronic venous insufficiency; venous leg ulcers; thrombophlebitis; deep venous thrombosis; after venous surgery; primary and secondary lymphoedema. <a href="https://www.woundcarehandbook.com/companies/essity-t-a-bsnmedical/comprilan/">https://www.woundcarehandbook.com/companies/essity-t-a-bsnmedical/comprilan/</a>	Advanced peripheral arterial occlusive disease; decompensated cardiac insufficiency; septic phlebitis; phlegmasia coerulea dolens <a href="https://www.woundcarehandbook.com/companies/essity-t-a-bsnmedical/comprilan/">https://www.woundcarehandbook.com/companies/essity-t-a-bsnmedical/comprilan/</a>
		12cm x 5m	£4.32		
		6cm x 5m	£2.81		
		8cm x 5m	£3.30		

# Compression Bandages Continued

## Combination of Long and Short Stretch

Product Name	Sizes	Costs	Use	Precautions / Contraindications
KTwo is a two layer compression system which gives an even distribution of pressure. KTwo is suitable for treating active or healed venous leg ulcers as well as oedema. KTwo combines both short and long stretch bandages to provide an two layer compression system				
<b>K-TWO</b>	18–25cm, 10cm 25–32cm, 10cm 18–25cm, 10cm (latex free) 25–32cm, 10cm (latex free)	£8.35 £9.1 £8.87 £9.69	Two-layer compression bandage system that combines elastic and inelastic components. Provides sustained graduated compression for up to 7 days. The first layer, K-Tech, is a short-stretch (inelastic) bandage that delivers stiffness, absorbency and 80% of the pressure. The second-layer, K-Press, is an elastic, cohesive bandage that keeps the system in place and provides additional compression, to achieve therapeutic pressure.  For the treatment of venous leg ulcers, venous oedema and lymphoedema.	Arterial disease (ABPI <0.8). Diabetic microangiopathy, ischaemic phlebitis and septic thrombosis. Allergy to any of the components, in particular latex for the 'non-latex-free' version. Ulceration caused by infection.
<b>K-TWO REDUCED</b>	18–25cm, 10cm 25–32cm, 10cm 18–25cm, 10cm (latex free) 25–32cm, 10cm (latex free)	£8.35 £9.13 £8.87 £9.69	Two-layer compression bandage system that combines elastic and inelastic components. Provides sustained graduated compression for up to 7 days. The first layer, K-Tech, is a short-stretch (inelastic) bandage that delivers stiffness, absorbency and 80% of the pressure. The second-layer, K-Press, is an elastic, cohesive bandage that keeps the system in place and provides additional compression, to provide therapeutic compression. UgoKTwo Reduced donates an average pressure of 20mmHg at the ankle. Also available in latex-free.  For the treatment of mixed aetiology leg ulcers, associated oedema and lymphoedema.	Severe arterial disease (ABPI <0.6). Diabetic microangiopathy, ischaemic phlebitis and septic thrombosis. Allergy to any of the components, in particular latex for the 'non-latex-free' version. Ulceration caused by infection.

# Compression Bandaging Accessories – Toe Caps

When assessing for compression bandaging ensure an assessment of the foot is completed and any oedema in the foot or toes is compressed using toe bandaging / and or foot caps. Ensure appropriate guidelines are followed to assess patients and select the most appropriate compression product e.g. venous leg ulcer guidelines.

Product Category	Product Name	Sizes	Costs	Use	Precautions / Contraindications	Application	Tips
ToeBandages	K-band	5cmx4m	£0.21	Consists of a lightweight knitted fabric containing viscose and nylon. Highly conformable.  Dressing retention.	None listed.		
		7cmx4m	£0.27				
		10cmx4m	£0.29				
		15cmx4m	£0.52				
ToeCaps	JOBST® Farrow® Toe Caps	XS – L 15 – 20mmHg or 20 – 30mmHg	£27.73	The toe cap provides a gentle compression for patients with mild to moderate oedema. JOBST® Farrow® Toe Cap covers a broad range of patients.  The comfortable fabric and ultra-thin seams ensure a high wearing comfort.  Fine seams with ultra-thin and smooth compression fabric.  Choice of colours and sizes.	Be careful not to remove too much of the toe length, when cutting.	Position the toe cap so that it comfortably fits over the toes and foot.  Work toe cap in between your toes to web space.  If the toe lengths are too long, mark the toe at the appropriate length and remove the toe cap, then trim the length of the toe fabric to the marked area and reapply.	Trimable.  Can be worn together with JOBST® FarrowWrap® foot piece.  Can be used on either foot.

# Compression Hosiery - RAL Standard

## Maintenance & Prevention - Below Knee

RAL standard compression hosiery is recommended for patients with lower leg oedema or lymphoedema associated with or without ulceration. Can also be used for vascular disease.

**Complete holistic lower limb assessment including Doppler prior to application.**

Risk factors to consider include: ABPI results, indicating arterial disease, intermittent claudication, pain at rest, capillary refill, warmth of feet, cardiac disease and diabetes.

Product Category	Product Name	Sizes		Costs	Indication for Use	Product Information	Precautions / Contraindications
Ready-to-Wear Compression Hosiery	JOBST® UltraSheer RAL CCL1 18-21mmHg RAL CCL2 23-32mmHg	Knee High Size 1 – 6 Petite or Regular		£27.67	JOBST® UltraSheer: RAL CCL1-2 <ul style="list-style-type: none"> <li>Minimal shape distortion</li> <li>Minimal oedema</li> <li>Management of lymphatic and venous conditions and help prevent recurrence of leg ulcers</li> <li>Chronic venous insufficiency; tired, heavy legs; moderate to severe varicosis</li> <li>Pregnancy related varicosis (CCL1)</li> </ul> The fine yarns deliver superior breathability and moisture management making the garments more comfortable to wear.	<ul style="list-style-type: none"> <li>5 colours</li> <li>Open or closed toe</li> <li>6 months guarantee</li> <li>Machine washable</li> </ul>	JOBST® Ready-to-Wear compression garments are contraindicated when any of the following conditions are present: <ul style="list-style-type: none"> <li>Severe arterial insufficiency</li> <li>Uncontrolled congestive heart failure</li> <li>Untreated infection</li> </ul>
	JOBST® Opaque RAL CCL1 18-21mmHg RAL CCL2 23-32mmHg	Knee High Size 1 – 6 Petite or Regular		£27.90	JOBST® Opaque: RAL CCL1-2 Ready-to-wear, circular-knit hosiery for the treatment of MILD to MODERATE oedema and venous disease. The Nilit Aquarius fibres effectively wick away moisture; the double-covered inlay yarns make JOBST® Opaque incredibly easy to don.		
	JOBST® forMen Explore RAL CCL1 18-21mmHg RAL CCL2 23-32mmHg	Knee High Size 1 – 6 Regular or Long		£29.22	JOBST® forMen Explore: RAL CCL1-2 <ul style="list-style-type: none"> <li>Minimal shape distortion</li> <li>Minimal oedema</li> <li>Management of lymphatic and venous conditions and help prevent recurrence of leg ulcers</li> <li>Chronic venous insufficiency; tired, heavy legs; moderate to severe varicosis</li> </ul>	<ul style="list-style-type: none"> <li>4 colours</li> <li>Closed toe</li> <li>6 months guarantee</li> <li>Machine washable</li> </ul>	
	JOBST® forMen Ambition RAL CCL1 18-21mmHg RAL CCL2 23-32mmHg	Knee High Size 1 – 6 Regular or Long		£29.22	JOBST® forMen Ambition: RAL CCL1-2 <ul style="list-style-type: none"> <li>Minimal shape distortion</li> <li>Minimal oedema</li> <li>Management of lymphatic and venous conditions and help prevent recurrence of leg ulcers</li> <li>Chronic venous insufficiency; tired, heavy legs; moderate to severe varicosis</li> </ul>		
	JOBST® Classic RAL CCL2	CCL2	Knee High	£27.64	JOBST® Classic: RAL CCL2-3 Ready-to-wear, circular-knit hosiery for the treatment of MODERATE oedema and venous disease. <ul style="list-style-type: none"> <li>Mild to moderate oedema</li> <li>Spider veins</li> </ul>		Occasionally, the wearing of compression garments can lead to problems in the following cases: <ul style="list-style-type: none"> <li>Immobility (confinement to bed)</li> <li>Skin infections</li> <li>Weeping dermatoses</li> <li>Incompatibility to fabric</li> <li>Impaired sensitivity of the limb (e.g.: in diabetes mellitus)</li> <li>Primary chronic polyarthritis</li> </ul>

	<b>23-32mmHg RAL</b> <b>CCL3</b> <b>34-46mmHg</b>	CCL3	Knee High	£30.35	<ul style="list-style-type: none"><li>• Varicose veins</li><li>• Chronic venous disease</li><li>• Heavy and swollen legs</li></ul>		
--	---	------	-----------	--------	--	--	--

# Compression Hosiery - RAL Standard

## Maintenance & Prevention - Full Leg

RAL standard compression hosiery is recommended for patients with lower leg oedema or lymphoedema associated with or without ulceration. Can also be used for vascular disease.

**Complete holistic lower limb assessment including Doppler prior to application.**

Risk factors to consider include: ABPI results, indicating arterial disease, intermittent claudication, pain at rest, capillary refill, warmth of feet, cardiac disease and diabetes.

Product Category	Product Name	Sizes		Costs	Indication for Use	Product Information	Precautions / Contraindications		
Ready-to-Wear Compression Hosiery	JOBST® UltraSheer RAL CCL1 18-21mmHg RAL CCL2 23-32mmHg	Thigh High Size 1 – 6 Petite or Regular		£53.14	JOBST® UltraSheer: RAL CCL1-2 <ul style="list-style-type: none"><li>Minimal shape distortion</li><li>Minimal oedema</li><li>Management of lymphatic and venous conditions and help prevent recurrence of leg ulcers</li><li>Chronic venous insufficiency; tired, heavy legs; moderate to severe varicosis</li><li>Pregnancy related varicosis (CCL1)</li></ul> The fine yarns deliver superior breathability and moisture management making the garments more comfortable to wear.	<ul style="list-style-type: none"><li>5 colours</li><li>Open or closed toe</li><li>6 months guarantee</li><li>Machine washable</li></ul>	JOBST® Ready-to-Wear compression garments are contraindicated when any of the following conditions are present: <ul style="list-style-type: none"><li>Severe arterial insufficiency</li><li>Uncontrolled congestive heart failure</li><li>Untreated infection</li></ul> Occasionally, the wearing of compression garments can lead to problems in the following cases: <ul style="list-style-type: none"><li>Immobility (confinement to bed)</li><li>Skin infections</li></ul>		
		Tights Size 1 – 6 Petite or Regular		£48.17					
	JOBST® Opaque RAL CCL1 18-21mmHg RAL CCL2 23-32mmHg	Thigh High Size 1 – 6 Petite or Regular		£53.24	JOBST® Opaque: RAL CCL1-2 Ready-to-wear, circular-knit hosiery for the treatment of MILD to MODERATE oedema and venous disease. The Nilit Aquarius fibres effectively wick away moisture; the double-covered inlay yarns make JOBST® Opaque incredibly easy to don.				<ul style="list-style-type: none"><li>Weeping dermatoses</li><li>Incompatibility to fabric</li><li>Impaired sensitivity of the limb (e.g.: in diabetes mellitus)</li><li>Primary chronic polyarthritis</li></ul>
		Tights Size 1 – 6 Petite or Regular		£48.79					
	JOBST® Classic RAL CCL2 23-32mmHg RAL CCL3 34-46mmHg	CCL2	Thigh High	£52.52	JOBST® Classic: RAL CCL2-3 Ready-to-wear, circular-knit hosiery for the treatment of MODERATE oedema and venous disease. <ul style="list-style-type: none"><li>Mild to moderate oedema</li><li>Spider veins</li><li>Varicose veins</li><li>Chronic venous disease</li><li>Heavy and swollen legs</li></ul>				
		CCL3	Thigh High	£57.44					
		CCL2	Tights	£48.13					
		CCL3	Tights	£52.04					

# Compression Hosiery - RAL Standard – Custom-fit

## Maintenance & Prevention

RAL standard compression hosiery is recommended for patients with lower leg oedema or lymphoedema associated with or without ulceration.

**Complete holistic leg ulcer assessment including Doppler prior to application.**

Risk factors to consider include: ABPI results, indicating arterial disease, intermittent claudication, pain at rest, capillary refill, warmth of feet, cardiac disease and diabetes.

Product Category	Product Name	Sizes	Costs	Indication for Use	Product Information	Precautions / Contraindications
Custom-Fit Compression Hosiery	JOBST® Elvarex® Custom Fit Compression Hosiery RAL CCL 1-4S	Refer to JOBST® Elvarex® Custom Fit Measuring Form	Vary depending on CCL and style of garment ordered	JOBST® Elvarex®: Custom-fit, compression garment, RAL CCL 1-4S Custom-fit, flat-knit garments for the management of MODERATE to SEVERE chronic oedema. • Mild to severe oedema. • Limb distortion. • Primary or secondary lymphoedema • Helps prevent recurring venous leg ulcers, chronic venous insufficiency, mild to severe varicosis.	<ul style="list-style-type: none"> <li>Made to measure flat knit compression garment</li> <li>Various styles available</li> <li>6 Month Guarantee</li> <li>Machine Washable</li> </ul>	<p>JOBST® Custom Fit compression garments are contraindicated when any of the following conditions are present:</p> <ul style="list-style-type: none"> <li>Severe arterial insufficiency</li> <li>Uncontrolled congestive heart failure</li> <li>Untreated infection</li> </ul> <p>Occasionally, the wearing of compression garments can lead to problems in the following cases:</p> <ul style="list-style-type: none"> <li>Immobility (confinement to bed)</li> <li>Skin infections</li> <li>Weeping dermatoses</li> <li>Incompatibility to fabric</li> <li>Impaired sensitivity of the limb (e.g.: in diabetes mellitus)</li> <li>Primary chronic polyarthritis</li> </ul>
	JOBST® Elvarex® Soft Custom Fit Compression Hosiery RAL CCL 1-3	Refer to JOBST® Elvarex® Custom Fit Measuring Form	Vary depending on CCL and style of garment ordered	JOBST® Elvarex® Soft: Custom-fit, compression garment, RAL CCL 1-3 • Mild to severe oedema. • Limb distortion. • Primary or secondary lymphoedema. • Helps prevent recurring venous leg ulcers, chronic venous insufficiency, mild to severe varicosis. • Suitable for patients with dry, sensitive and fragile skin • Latex Free		
	JOBST® Elvarex® Plus Foot Caps RAL CCL 1-2	Refer to JOBST® Elvarex® Plus Measuring Form	Vary depending on CCL and style of garment ordered	JOBST® Elvarex® Plus: Custom-fit, compression garment, RAL CCL 1-2 Custom-fit, flat-knit foot-caps for the management of chronic oedema	<ul style="list-style-type: none"> <li>Made to measure flat knit compression garment</li> <li>6 Month Guarantee</li> <li>Machine Washable</li> </ul>	
	JOBST® Elvarex® Soft Seamless Foot Caps RAL CCL 1-2	Refer to JOBST® Elvarex® Soft Seamless Measuring Form	Vary depending on CCL and style of garment ordered	JOBST® Elvarex® Soft Seamless Latex free, custom-fit, flat-knit foot-caps for the management of chronic oedema.		

# Compression Hosiery - British Standard

Not to be used first line – only to be used under TVN guidance on FP10

Product Category	Product Name	Sizes	Costs	Use	Precautions / Contraindications
Compression Hosiery	Credalast Cotton Credalast Nylon	<p><b>Small:</b> ankle 18–22cm; calf 28–34cm; thigh 40–54cm.</p> <p><b>Leg length (cm):</b> standard: heel-knee, up to 38; long: heel-knee, up to 45</p> <p><b>Medium:</b> ankle 20–24cm; calf 32–38cm; thigh 46–60cm.</p> <p><b>Leg length (cm):</b> standard: heel-knee, up to 38; long: heel-knee, up to 45</p> <p><b>Large:</b> ankle 24–28cm; calf 36–42cm; thigh 54–68cm.</p> <p><b>Leg length (cm):</b> standard: heel-knee, up to 38; long: heel-knee, up to 45</p> <p><b>Extra large:</b> ankle 28–32cm; calf 40–46cm; thigh 60–74cm.</p> <p><b>Leg length (cm):</b> standard: heel-knee, up to 38; long: heel-knee, up to 45</p>	<p><b>Class 1:</b> below knee: £7.73; thigh: £8.47.</p> <p><b>Class 2:</b> below knee: £11.31; thigh: £12.58.</p> <p><b>Class 3:</b> below knee: £12.82; thigh: £14.91.</p>	<p>Class 1 (14–17mmHg): light (mild) support for superficial or early varices including those occurring during pregnancy.</p> <p>Class 2 (18–24mmHg): medium (moderate) support for varices of medium severity; ulcer treatment and prevention of recurrence; mild oedema and varicosis during pregnancy.</p> <p>Class 3 (25–35mmHg): strong support for gross varices; post-thrombotic venous insufficiency; gross oedema; ulcer treatment and prevention of recurrence.</p>	Arterial disease based on vascular assessment; severe heart disease; diabetes (unless under medical supervision); loss of feeling in the legs. Precautions: known allergy to compression stocking fabric; severe infections of the veins or skin. See instructions for use.
	Credalast Velvet Credalast Classic	Made-to-measure	<p>Class 1, 2, 3: below knee: £28.02; thigh: £44.80.</p> <p>Flat-bed 1/2/3: below knee: £28.03; thigh: £44.80</p>		



# Compression Wraps

Compression wraps devices are recommended for patients with lower leg oedema and / or lymphoedema associated with or without ulceration.

**Complete holistic leg ulcer assessment including Doppler prior to application.**

Risk factors to consider include: ABPI results, indicating arterial disease, intermittent claudication, pain at rest, capillary refill, warmth of feet, cardiac disease and diabetes

Product Category	Product Name	Sizes	Costs	Use	Precautions / Contraindications	Application	Tips
WrapCompressionSystems	JOBST® FarrowWrap® 4000 Kit 30-40mmHg	Leg Piece & Sock XS - L (Regular & Tall)	£106.57	JOBST® FarrowWrap® 4000 provides even compression of 30-40mmHg for patients with mild to moderate venous and lymphatic conditions, with or without a leg ulcer present. Foot swelling is addressed with the JOBST® FarrowHybrid®, providing compression from foot to ankle.	NOT be worn if you have the following medical conditions:  <ul style="list-style-type: none"><li>Moderate to severe arterial disease</li><li>Mild arterial disease in the presence of peripheral neuropathy</li><li>Untreated vein infection (septic phlebitis)</li><li>Uncontrolled (decompensated) congestive heart failure</li><li>Untreated and / or advancing skin infection (cellulitis) involving the feet or legs</li><li>Large blood clot in the vein of the leg (phlegmasia coerulea dolens)</li></ul>	Follow application Instructions on leaflet in packaging.	Fold Velcro™ back on itself before application, when taking garment off to aid donning and doffing and before washing.  Liners supplied with each wrap piece.
	JOBST® FarrowHybrid® Sock (pairs) 20-30mmHg 30-40mmHg	XS - XL (Regular & Wide)	£24.59				
	JOBST® FarrowWrap® Lite 20-30mmHg	Foot Piece XS – XL (Regular & Long)	£38.30	JOBST® FarrowWrap® is a wrap compression system that consists of a liner and an outer wrap piece.  How does JOBST® FarrowWrap® achieve compression? <ul style="list-style-type: none"><li>Special fabrics comprised of layers of fabric</li><li>Smart, elastic, short-stretch bands</li><li>Top to bottom band overlap</li><li>Optimal band width</li></ul> Indications are for lymphoedema, chronic oedema, chronic venous insufficiency & Leg Ulcer Management (Classic & Strong Only)			
		Leg Piece XS - XL (Regular & Tall)	£136.78				
		Thigh Piece (Incl Knee) XS - XL (Short, Regular & Tall)	£136.78				
	JOBST® FarrowWrap® Classic* 30-40mmHg	Foot Piece XS – XL (Regular & Long)	£38.30				
		Leg Piece XS - XL (Regular & Tall)	£136.78				
		Thigh Piece (Incl Knee) XS - XL (Short, Regular & Tall)	£136.78				
	JOBST® FarrowWrap® Strong* 30-40mmHg	Foot Piece XS – XL (Regular & Long)	£37.96				
		Leg Piece XS - XL (Regular & Tall)	£135.58				
		Thigh Piece (Incl Knee) XS - XL (Short, Regular & Tall)	£135.58				





# Lymphoedema Specialist Options

**Additional Products ONLY to be used under instruction from Lymphoedema Service**

Products for use by Lymphoedema Service currently under review

# Hosiery Donning Aids

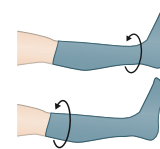
Hosiery aids to be ordered via FP10

Product Name	Sizes	Costs	Use	Precautions / Contraindications	Application
<b>ACTI-GLIDE</b> 	One size	£15.22	Aids application of compression hosiery (below-knee and thigh length) and armsleeves.	Known sensitivity to the fabric.	<a href="https://lohmann-rauscher.co.uk/compression-therapy/compression-hosiery/actiglide/">https://lohmann-rauscher.co.uk/compression-therapy/compression-hosiery/actiglide/</a>
<b>EZY-AS</b> 	Small, medium, large	£34.20 Handles: £16.10	Compression stocking/garment applicator. Handles available to assist application on legs.	None listed	<a href="https://ezyasabc.co.uk/resources/Instructions.pdf">https://ezyasabc.co.uk/resources/Instructions.pdf</a>
<b>EASY FIT</b> 	Large Extra large	£35.40	Donning and doffing of medical compression stockings.	Should only be used when the patient is seated. Patients with a larger leg circumference should use the XL size, whose wider opening is suitable for an ankle circumferences of 26cm or above.	<a href="https://www.youtube.com/watch?v=oErYmaUsNNE">https://www.youtube.com/watch?v=oErYmaUsNNE</a>
<b>MELANY</b> 	Extra small, small, medium and large	£43.04	Application and removal of compression garments.	None listed	<a href="https://www.sigvaris.group/globalassets/pdf/pdf-local/uk/medical-literature/web_a5_melany.pdf">https://www.sigvaris.group/globalassets/pdf/pdf-local/uk/medical-literature/web_a5_melany.pdf</a>

# JOBST® UlcerCare™ Liners and Kits Chart

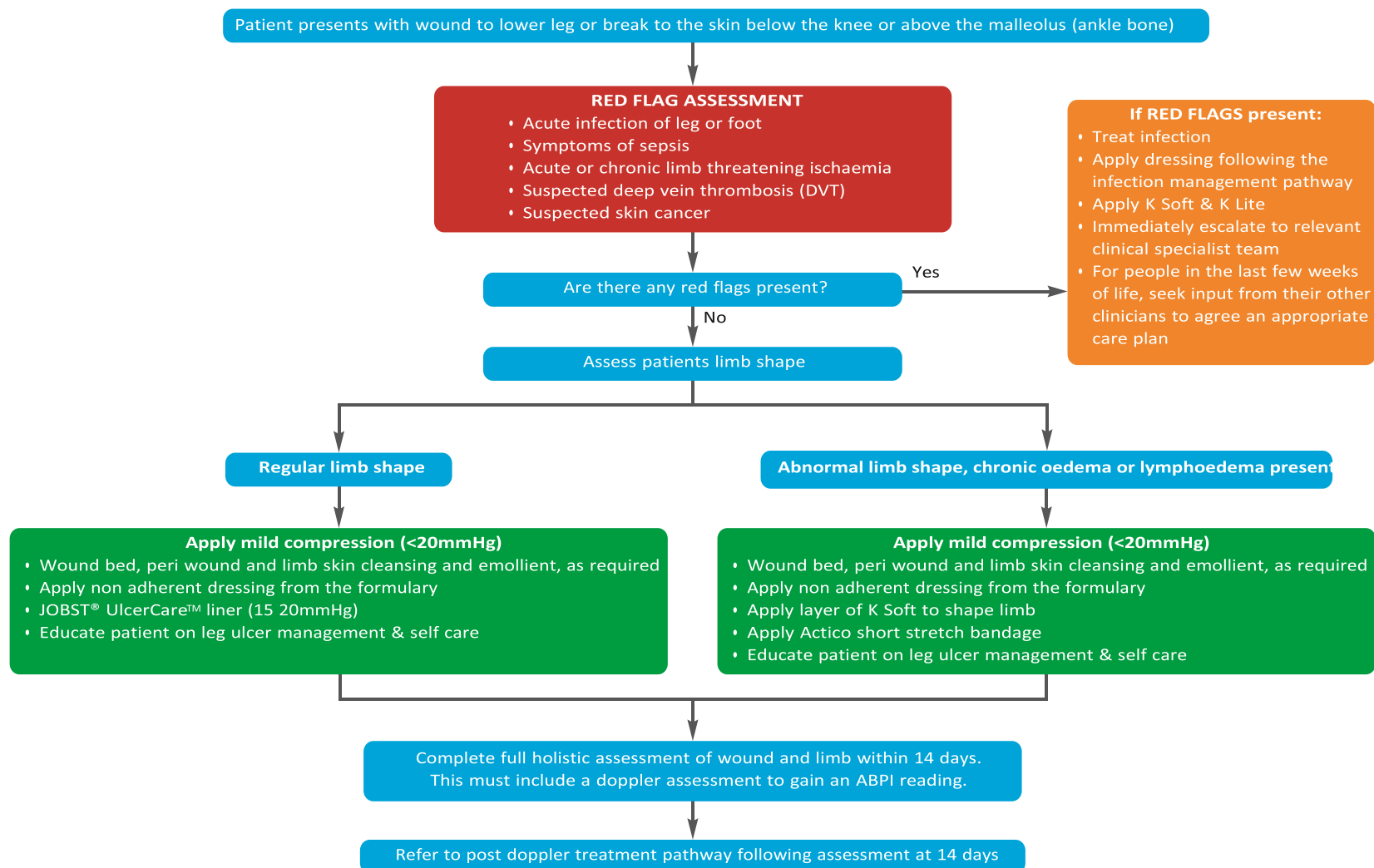
## Ready-to-Wear Measuring Guide

Size	S	M	L	XL	2XL	3XL	4XL
Ankle	18 – 21 cm	21 – 24 cm	24 – 27 cm	27 – 30 cm	30 – 33 cm	33 – 36 cm	36 – 39 cm
Calf	29 – 35 cm	34 – 41 cm	40 – 47 cm	46 – 54 cm	48 – 56 cm	50 – 58 cm	52 – 60 cm

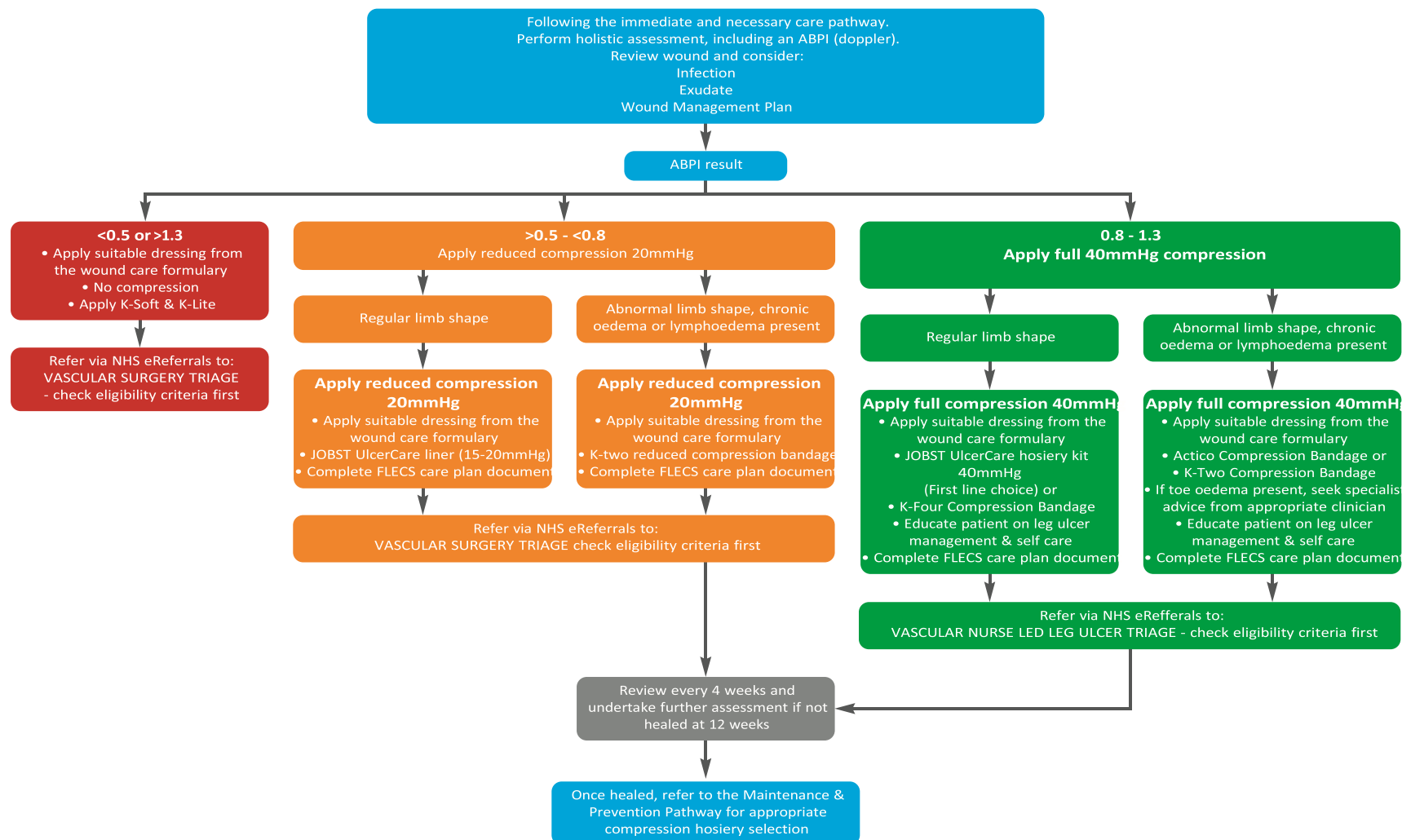


For more product information and measuring support please contact:  
Essity at 01482 670100

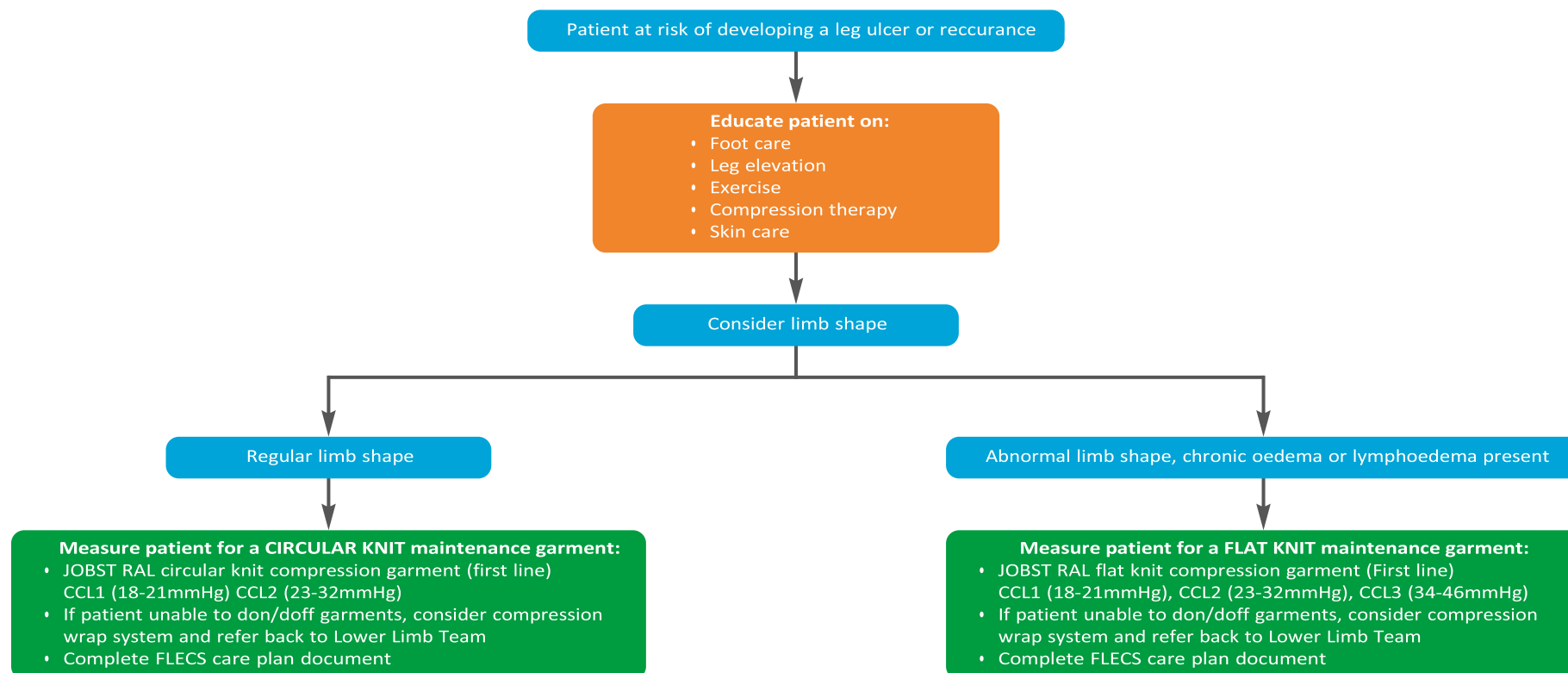
## Immediate and Necessary Care Pre-Doppler Pathway



## Post-doppler treatment pathway



# Maintenance & Prevention Pathway



JOBST Garments must be replaced every 6 months

