

Catheter and Continence Equipment [Adults]- First Line Prescribing Formulary Guide

Document Summary	
Directorate:	Medicines Optimisation
Document Purpose:	To inform prescribers in Hull and ERYCCGs about the continence formulary
Document Name:	Guidance on prescribing continence appliances in primary care within Hull and ERY Clinical Commissioning Groups
Document Ref No.	
Author:	Andrea Murray/Julie Curran/Laura Bulmer
Report Owner or Sponsor:	Julie Curran
Target Audience:	All prescribers in Hull and the East Riding of Yorkshire CCGs
Superseded Document:	N/A
Action Required:	To note for compliance with the procedure
Contact Details (for further information and feedback)	Name & Title: Julie Curran Tel: 01482 672142 E-mail: julie.curran1@nhs.net
Document Status	
<p>This is a controlled document. Whilst this document may be printed, the electronic version posted on the intranet is the controlled copy. Any printed copies of this document are not controlled.</p> <p>As a controlled document, this document should not be saved onto local or network drives but should always be accessed from the intranet.</p>	

Developed by Bladder & Bowel Health Specialist Service (CHCP) in conjunction with the Medicine Optimisation team (NECS). Fourth Addition

Table of Contents

1. Introduction	4
1.1. Aim.....	4
1.2. Scope of the guidance	4
1.3. Key messages	4
1.4. Responsibilities of the General Practice	5
References.....	7
Acknowledgements	7
Appendix Two: Formulary	9
Appendix Three: Abbreviations.....	28

1. Introduction

1.1. Aim

- The aim of this document is to provide guidance on issuing prescriptions for appliances to manage bladder and bowel dysfunction, to help reduce over-ordering, wastage, poor communication and inappropriate use.
- The document outlines the responsibilities of the Bladder and Bowel Health Practitioners, GP, dispensing contractor (dispensing appliance contractor (DAC), community pharmacy and dispensing doctor) and the patient/carers or relatives.

The healthcare professional (HCP) who prescribes the treatment legally assumes clinical responsibility for the treatment and the consequences of its use.

1.2. Scope of the guidance

This guidance is designed to be used by all prescribers, GP practices and specialist nurses.

1.3. Key messages

1.3.1. Responsibilities of the HCP initiating urinary catheterisation

To perform a full continence assessment.

Select and initiate the most appropriate product(s) for treatment/management without pressure from any sponsoring company.

Product selection should be made to meet the individual patient clinical needs (not all products are suitable for all patients).

All patients must be supplied with a Catheter Passport, the details must be completed by the healthcare professional.

If formulary products do not meet the patient's clinical need and an alternative is required, liaise with Bladder and Bowel Health Practitioners for guidance.

- Appendix 2 provides guidance to prescribers for cost effective first line products. It is not intended to restrict patient choice.
- Only continence products listed in the Drug Tariff should be initiated.
- Ensure the patient has an established treatment plan that they fully understand.
- Discuss with the patient if they would like to continue using their preferred dispenser for continence appliances or to have their prescription sent to a DAC.
- Communicate promptly with the patient's GP/DAC regarding:
 - Product initiation (including product codes)
 - Expected monthly usage

- Expected duration of treatment; or, if long term, date of next review.
- Monitor response to treatment, or advise GP of monitoring requirements.
- Following any change to prescription, advise both GP and dispensing contractor (where appropriate) of any modifications. This will include advising of any products no longer required.
- The HCP will not request any products to be supplied via a DAC before a prescription is issued.
- Ensure that there are clear arrangements for back-up stock, advice and support.
- Ensure patients understand how and when to re-order products (GP / DAC).
- HCPs must remember that the risks associated with catheter usage are of a serious nature that increasingly may become more difficult to justify.
- The need for urinary catheterisation must be reviewed at every catheter change and as the patient's circumstances change.
- An initial continence assessment and risk assessment should be carried out to ensure that there is clinical need and that catheterisation is deemed necessary.
- The patient's suitability for intermittent, supra-pubic or urethral catheterisation must be considered.
- The risks, advantages and disadvantages must be discussed with the patient prior to inserting a new catheter to ensure that they can make an informed choice.
- Registered nurses should not promote indwelling catheterisation to be the best or easiest option for the patient and it must never be undertaken for nursing or carer convenience.
- When an indwelling catheter is inserted a plan for early removal should be made, due to the infection risk increasing on a daily basis.
- Registered nurses must be aware of the serious implications and risks when making the decision to catheterise a patient.
- Following discharge from Secondary Care, where urinary catheterisation is part of the treatment, this is usually temporary, patients may be readmitted for a trial without catheter (TOC) or arrangements made for this to be performed in the community.
- Where chronic retention is present accompanied by a history of renal dysfunction/damage and intermittent self-catheterisation is not a viable option.

1.4. Responsibilities of the General Practice

Initiate a system for supply and then continue prescribing, adjusting prescriptions for product(s) as advised by the specialist only.

- Check quantities requested against information in the Formulary; this gives suggested quantities, directions and notes to assist with prescribing. Be aware of the normal usage rate by the patient and ensure that any irregularities are flagged to the GP and reviewed with the patient/carers.
- The prescriber will take clinical responsibility for products prescribed.

- The practice should not issue retrospective prescriptions requested by the dispensing appliance contractor.
 - The DAC must receive the prescription PRIOR to the delivery of items.
 - If the dispensing contractor delivers item(s) prior to receiving a prescription, a prescription may not be issued to cover the supply if it is not considered necessary/appropriate.
- Print the prescription for the patient/carer (or send to DAC) within the agreed turnaround time and by the agreed method of dispatch.
- If using Electronic Prescription Service (EPS), the patient can nominate a pharmacy for the dispensing of medicines AND an appliance contractor for the dispensing of continence appliances.
- Document any communication from the dispensing contractor and specialist in the patient's clinical record.
- Report to and seek advice from the Bladder & Bowel health practitioner, consultant or prescriber on any aspect of patient care that is of concern and may affect treatment.
- Stop or adjust treatment/management on the advice of Bladder and Bowel Practitioner or prescriber or immediately if an urgent need to stop treatment arises.
- Copies of the Appliance Use Review (AUR) should be reviewed by an appropriate person in the practice and stored in the patient's medical records.
- Ensure clear communication to the patient with regard to the process agreed between the practice and the contractor e.g. the interval prior to delivery when the regular prescription request should be submitted.
- When a patient dies, the practice must inform the dispensing contractor so that any prescriptions (including repeat dispensing prescriptions) that have not yet been sent or dispensed can be retrieved and destroyed.
- The practice should ensure that the patient/carer:
 - Understands the treatment.
 - Is aware of how to raise any concerns and report any problems in relation to the treatment.
 - Understands the ordering process and reports any problems with supply to the specialist or GP.
- It is strongly recommended that the practice has its own agreed protocol for how it deals with dispensing contractors.

1.4.1. Points to consider

- Where possible, agree a named person at the GP practice for managing prescription requests for appliances.
- If possible, agree a named contact with the dispensing contractor. All prescription requests should come from the patient/carer, however the contractor may need to be contacted to clarify the delivery schedule, product availability etc.

- Consider frequency of supply and the turnaround time from request of prescription by dispensing contractor to dispatch of prescription from surgery (e.g. 48 hours).
- Consider method of receipt of prescription by contractor e.g. post or EPS. It is recommended that if prescriptions are posted to contractors, a record is kept and if possible a certificate of posting obtained (to help with any queries regarding missing prescriptions).
- It is strongly recommended that requests for emergency prescriptions should only be accepted from the patient/carer.

If there are concerns around over ordering or the first line choice listed is unsuitable please contact your Bladder and Bowel Health Service for further advice and support on 01482 347894 ERY or 01482 247111 Hull

Responsibilities of the patient or carer

- To order when they reach a defined threshold sufficient to allow time for the processing of the prescription.
- To avoid stock piling:
 - products have a recommended shelf life and are influenced by changes in temperature.
 - product choice may change over a period of time.

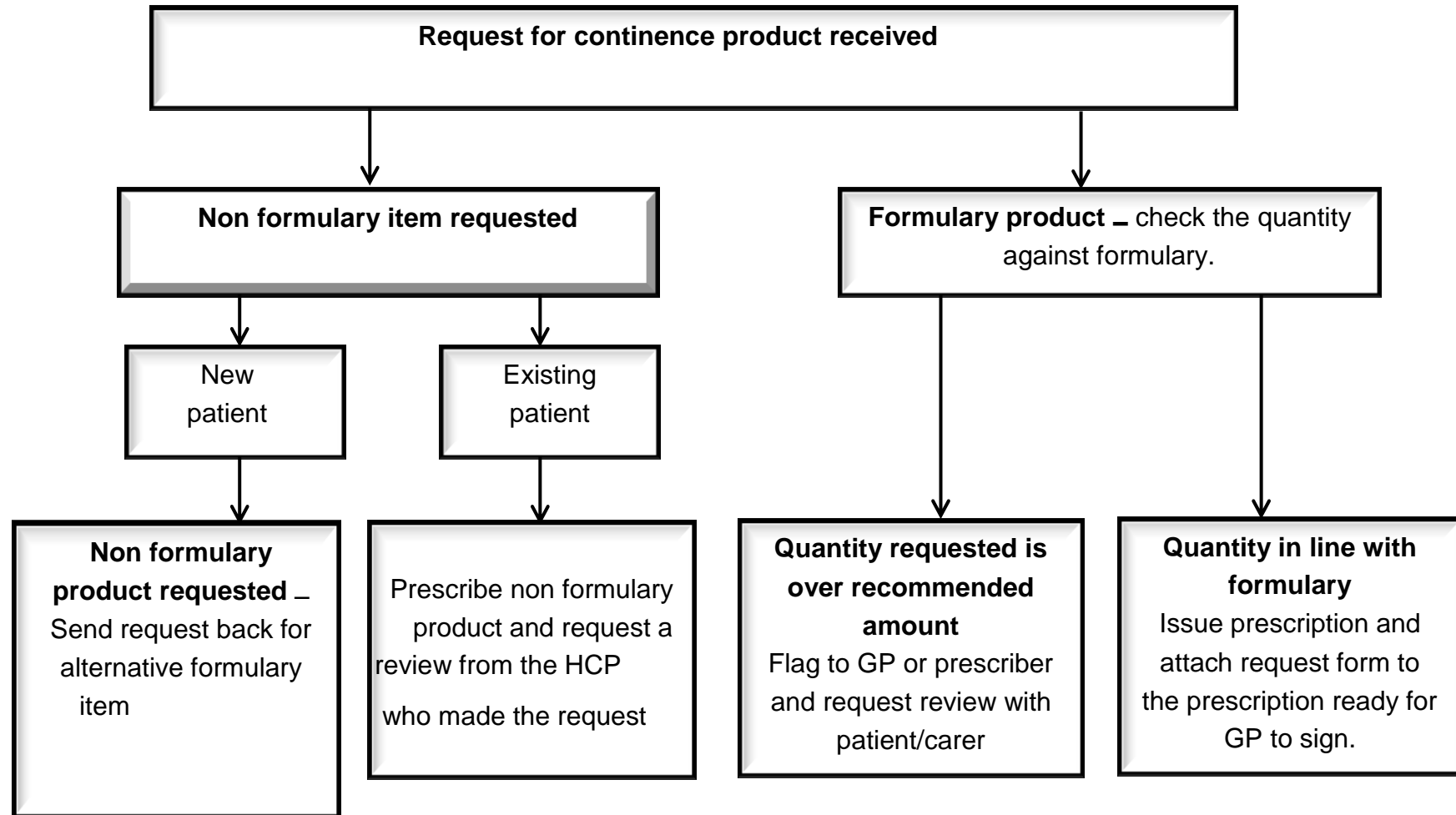
References

1. PrescQIPP
2. NICE (2017) Infection; Prevention and control of healthcare-associated infections in primary and community care; London
3. Royal College of Nursing (2012) Catheter Care Guidance for nurses. London: RCN
4. Pratt et Al Evidence Based Guidelines for Prevention Health Care Infections in NHS Hospital in England Journal of Hospital Infection 65SS1-S64
5. FillinghamS, Douglasj(2005)Urological Nursing (3rd edition) Bailliere Tindall,London

Acknowledgements

Hartlepool and Stockton-on Tees (HAST) CCG Guidance on Prescribing Continence products in General practice

Appendix One: Continence appliance prescription request algorithm for new and existing adult patients



Appendix Two: Formulary

Prices correct as at August 2018

Plain Lubricant (Check not included with catheter)				
Order code	Product	Unit price	Quantity	Notes
	Optilube 6ml syringe sterile lubricant	£0.91	1 per catheter	To use 1 st line One to be used at each catheter change. Order in singles appropriate to the number of catheters prescribed. For urethral catheter insertion 6ml female, 11ml male. Licensed for supra pubic use if required To reduce risk of urethral damage, discomfort and infection. 6ml for suprapubic catheterisation if required
	Optilube 11ml syringe sterile lubricant	£0.96	1 per catheter	

Anaesthetic lubricant /Lubricant (Check not included with catheter)				
Order code	Product	Unit price	Quantity	Notes
	Optilube Active CHG free 6ml syringe sterile anaesthetic lubricant with Lidocaine	£1.09	1 per catheter	Use 2nd line to facilitate pain free insertion To help reduce the risk of associated infection One to be used at each catheter change. Order in singles appropriate to the number of catheters prescribed Licensed for the male and female urethral catheterisation Not to be used for Supra-pubic catheterisation
	Optilube Active CHG free 11ml syringe sterile anaesthetic lubricant with Lidocaine	£1.14	1 per catheter	

Urinary Catheters

Patient assessment, reviews and ongoing evaluation is essential to prevent catheter related problems and risks such as associated urinary tract infections

Aim to remove catheter as soon as possible following insertion if appropriate

Aim to use the smallest catheter size that provides adequate drainage to avoid discomfort and irritation..

Select the correct length and type of catheter. Standard/male – for males/females and supra pubic catheterisation. Female length – for females only.

Use 10ml balloon, use the recommended amount of sterile water required to fully inflate the balloon.

Under inflation can distort the angle of the catheter tip, causing bladder spasm and bladder mucosa damage

Over inflation could prevent the catheter draining effectively

Short Term Catheters Supra pubic and urethral use. Can be left in place for a maximum of 28 days.

Use if frequent blocking occurs within the 28days and cannot be resolved

Patient must not have a Latex allergy

Order code	Product	Gauge/CH	Unit price	Quantity	Notes
DP210112	Rusch Aquaflate All PTFE Coated latex foley catheter Female length	12	£2.19	Initial prescription for 3 then One every 4 weeks	Female Includes empty syringe for deflation of previous catheter and a syringe prefilled with sterile water.
DP210114		14			
DP210116		16			
DP310112	Rusch Aquaflate All PTFE Coated latex foley catheter Male / standard length	12	£2.19		Male Includes empty syringe for deflation of previous catheter and a syringe prefilled with sterile water.
DP310114		14			
DP310116		16			

Long term Hydrogel coated Latex Catheters for Urethral & suprapubic use Can be used up to 12 weeks

Order code	Product	Gauge/CH	Unit price	Quantity	Notes
DH310112	Rusch Sympacath Aquaflate Hydrogel coated latex catheter. (Teleflex)	12	£6.27	Initial prescription for 3 then One every 12 weeks (no lubricant supplied)	Standard /Male length Includes empty syringe for deflation of previous catheter and a syringe prefilled with sterile water
DH310114		14			
DH310116		16			
DH210112	Rusch Sympacath Aquaflate Hydrogel coated latex catheter (Teleflex)	12	£6.27	Initial prescription for 3 then One every 12 weeks (no lubricant supplied)	Female Only Includes empty syringe for deflation of previous catheter and a syringe prefilled with sterile water.
DH210114		14			
DH210116		16			

Long Term Catheters All silicone - Urethral and Supra-pubic use. Can be used up to 12 weeks

Use for patients with a Latex sensitivity or to extend life of catheter which is persistently blocked by debris or encrustation

Comes with Lidocaine and Chlorhexidine anaesthetic gel – ensure patient does not have a Chlorhexidine allergy. Note: a separate prescription for anaesthetic gel is NOT required

Order code	Product	Gauge/CH	Unit price	Quantity	Notes
08501205W	Foley 2-way Round tip silicone catheter. (L.IN.C Medical)	12	£5.57	Initial prescription for 3 then One every 12 weeks	Male / Standard length Have a reduced risk of balloon cuffing on deflation Includes empty syringe for deflation,
08501405W		14			
08501610W		16			
085012051W	Foley 2-way Round tip silicone catheter. (L.IN.C Medical)	12	£5.57	Initial Prescription for 3 then One every 12 weeks	Female Only Have a reduced risk of balloon cuffing on deflation Includes empty syringe for deflation Syringe containing sterile water for inflation.
085014051W		14			
085016101W		16			

Long Term Catheters All silicone - Urethral and Supra-pubic use. Can be used up to 12 weeks

Use for patients with a Latex sensitivity or to extend life of catheter which is persistently blocked by debris or encrustation

Order code	Product	Gauge/CH	Unit price	Quantity	Notes
PCF12M10	Prosys All silicone foley catheter (Clinisupplies)	12	£5.68	Initial prescription for 3 then One every 12 weeks (no lubricant supplied)	Standard/ Male 10ml balloon Includes empty syringe for deflation of previous catheter and a syringe prefilled with sterile water. Larger eyelets to promote better drainage Integral balloon to reduce risk of cuffing
PCF14M10		14			
PCF16M10		16			

PCF12F10	Prosys All silicone foley catheter (Clinisupplies)	12	Partners in improving local health £5.68	Initial prescription for 3 then One every 12 weeks (no lubricant supplied)	Female Only 10ml balloon Includes empty syringe for deflation of previous catheter and a syringe prefilled with sterile water. Larger eyelets to promote better drainage Integral balloon to reduce risk of cuffing
PCF14F10		14			
PCF16F10		16			
Long term catheter Hydrogel Coated Silicone catheter. Urethral and Supra-pubic use. Can be used up to 12 weeks Use only if the all silicone catheter causes irritation or discomfort to the client					
Order code	Product	Gauge/CH	Unit price	Quantity	Notes
D175812E	Lubrisil Aquaflate Hydrogel coated silicone catheter (Bard)	12	£9.68	Initial prescription for 3 then One every 12 weeks.(no lubricant supplied)	Standard/ Male Includes a syringe prefilled with sterile water This product will require a justification form completing before ordering
D175814E		14			
D175816E		16			

D176112E	Lubrisil Aquaflate Hydrogel coated silicone catheter (Bard)	12	£9.68	Initial prescription for 3 then One every 12 weeks.(no lubricant supplied)	Female only Includes a syringe prefilled with sterile water This product will require a justification form completing before ordering
D176114E		14			
D176116E		16			

Specialist catheters – for Urethral and suprapubic use
Can help with life of catheter in cases of persistent blockage

Comes with Lidocaine and Chlorhexidine anaesthetic gel – ensure patient does not have a Chlorhexidine allergy. Note: a separate prescription for anaesthetic gel is NOT required

Order code	Product	Gauge/CH	Unit price	Quantity	Notes
08451205W	Supra-Flo Open tip All silicone L. IN.C Medical	12	£10.95 (1)		Standard / male Includes sterile water filled syringe for balloon inflation, empty syringe for balloon
08451405W		14			

08451610W		16			deflation and a syringe of anaesthetic lubricant containing lidocaine & chlorhexidine for lubrication - ensure patient does not have a Chlorhexidine allergy Sizes 12 & 14CH have a 5ml balloon
08471205W	Supra-Flo Open tip All silicone L. IN.C Medical	12	£10.95 (1)		Female Only Includes as above
08471405W		14			
08471610W		16			

Catheter Valves

For use with indwelling catheters only. These provide a discrete alternative to drainage bags. Their use helps to imitate normal bladder function by allowing the bladder to fill and empty, maintaining normal capacity and tone. They prevent the catheter tip touching the bladder wall reducing the risk of tissue damage : NOT suitable for patients with a reduced bladder capacity, cognitive impairment, poor manual dexterity, renal impairment or Post Radical Prostatectomy

Order code	Product	Unit price	Quantity	Notes
CF1	L.IN.C Medical Care-Flo	£7.59 (5)	1 box of 5 per month	Catheter valves should be changed every 5-7 days. Add as direction
21104204	MacGregor Qufora	£8.50 (5)	1 box of 5 per month	

Catheter drainage bags – LEG BAGS

Leg bags may be worn in different positions on the leg, i.e. inside thigh/calf, which is an individual choice, and this will determine the length of the inlet tube. Maintaining a closed drainage system (i.e. not removing the leg bag when attaching a night bag) reduces the risk of infection. The leg bag must remain connected to the catheter and linked to the night bag if additional drainage capacity is required overnight. 500mls bags have been listed below, as this is the most common size used. Other volume leg bags are available - liaise with Bladder and Bowel Health Service if other volume bags are required

Order code	Product	Pack Size	price	Quantity	Notes
LM500SD-L	Linc-Flo Lever Tap Direct inlet	500mls x 10	£22.27	1 box of 10 every 10 week	All the leg bags are sterile L.IN.C include 1 pair of leg straps & a pair of sterile gloves with each bag Linc-Flo Leg bags should be changed every 5-7 days,- add this as a direction on the prescription No more than one box of ten should be issued alternate months (6 x10 boxes per year). Orders in excess should be questioned as it is poor practice and increases risk of infection to change more frequently than every 5-7 days.(including care homes)
LM500MD-L	Linc-Flo Lever Tap 10cm Tube				
LM500LD-L	Linc-Flo Lever Tap 30cm Tube				
LM500SD-T	Linc-Flo T Tap Direct inlet	500ml x10	£22.31		
LM500MD-T	Linc-Flo T Tap 10cm Tube				
LM500LD-T	Linc-Flo T Tap 30cm Tube				
12161704	Qufora Q flow Lever Tap Direct Tube	500ml x10	£22.40	1 box of 10 every 12 weeks	Qufora include a pair of sterile gloves with each bag and 1 pair of leg bag straps per box of 10 bags Qufora leg bags should be changed every 10 days – add this as a direction on the prescription (manufacturers recommendation).
12161804	Qufora sterile, Q flow Lever Tap Short Tube				
12161504	Qufora sterile, Q flow Lever Tap Long Tube				
12151704	Qufora T Tap Direct inlet Tube	500ml x10	£22.40		

12151804	Qufora T Tap Short inlet Tube				
12151504	Qufora T Tap Long inlet tube				

Night bags

Suitable for night time use for the collection of urine from indwelling catheters or urinary sheaths. The position of the bag should be below bladder level to enhance drainage. Night bags should be used in conjunction with a catheter stand, available from the companies (not available on FP10). Liaise with Bladder & Bowel service. Night bags should be directly connected to the leg bag to maintain a closed system.

Non-drainable night bags are the preferred option as single use reduces the risk of infection.

A 3L bag is available for patients with a high night time diuresis, liaise with Bladder & Bowel Service Practitioners

Order code	Product	Pack Size	Unit price	Quantity	Notes
LM2LNS	Non-sterile 2litre night bag (L.IN.C medical)	10 per pack	£2.13 per pack	3 packs per month	Single use. Drainable night bag with 100cm inlet tube and non-return valve. Tear off drainable tap
PSU2	Prosyst Non- sterile 2 litre night bag (Clinisupplies)	10 per pack	£3.06 per pack	3 packs per month	Single use drainable night bag T tap

Catheter accessories – Fixation devices

It is extremely important that both the catheter and the leg bag is well supported to reduce traction and trauma to the bladder neck/urethra and bladder wall

Order code	Product	Pack Size	Unit price	Quantity	Use
	FIX Strip (L.IN.C medical)	Adjustable Up to 100cms (4)	£9.95	1 pack of 4 every 4 to 6 months (including	The catheter strap is used as a retaining strap which secures the tubing or catheter firmly and comfortably against the leg to prevent tissue damage and traction trauma

			Partners in improving local health	care homes)	L.IN.C medical straps include a pair of scissors to cut the strap to size Larger sizes are available, if required These are washable and reusable
3002	UGO fix catheter strap Short	Up to 45cm (x5)	£12.68		
3003	UGO fix catheter Strap Medium	Upt o 80cm (x5)	£14.00		
3004	Ugo Fix Gentle	1 box of 5	£12.53	1 box every month	For the fixation of indwelling catheters, Fixation devices must be used to prevent traction trauma and tissue damage Adhesive with retainer to secure catheter in place – change every seven days Can be removed and repositioned
40-310	Clinimed Clinifix tube holder Small	Box of 10	£17.69	1 box every 10 week	Adhesive fixation devise to secure catheter in place – change every 7 days
40-410	Clinimed Clinifix tube holder Medium	Box of 10	£19.34	1 box every 10 week	Adhesive fixation devise to secure catheter in place – change every 7 days
FOL0102DT	Bard Statlock	Box of 5	£12.91	1 box every month	Adhesive fixation devise to secure catheter in place – change every 7 days Not to be used on friable skin
Order code	Product	Pack Size	Unit price	Quantity	Use
PLS3881	Clinisupplies Prosys sleeve small	24cm-40cm	£7.55 per pack of 4	One Pack of 4 should last for 4 to 6 months (including care homes)	Used to support leg bags attached to Indwelling catheters and urinary sheath systems.
PLS3904	Clinisupplies Prosys sleeve Medium	36cm-50cm	£7.55 per pack of 4		The leg bag sleeve can be used as an alternative to leg bag straps. Particularly if the patient has fragile skin, or problems with straps digging into or rubbing against the leg.
PLS3928	Clinisupplies Prosys sleeve Large	40cm-65cm	£7.55 per pack of 4		The patients leg must be measured to ensure the correct size sleeve is prescribed

3007	Ugo Fix sleeve Extra large	65cm-90cm	27.39 per pack of 4	Proslys sleeves are washable for 30 washes.
------	----------------------------	-----------	---------------------	---

Catheter maintenance solutions (CMS)

Must not be prescribed for routine use, catheter change should be performed rather than a solution being used on a regular basis (NICE 2012)

Catheter Maintenance solutions should NOT be used to prevent infection (NICE 2016)

CMS should NOT be used to unblock catheters (RCN 2012)

CMS are not recommended for routine catheter care, catheter blockage or bypassing. Reason for catheter blockage must always be established and documented
All other treatment options should be tried in the first instance. If unsure discuss with Bladder and Bowel Health Practitioners

CMS must not be instilled into the bladder with force or clamped and retained for any longer than 5mins .

CMS poses a risk of catheter associated UTI (CAUTI). Therefore if used, an antiseptic non-touch technique (ANTT) procedure must be followed and the use of CMS limited

First check for mechanical reasons for blockage i.e kinked/obstructive tubing/constipation and action

If used there must be a clear rational for use documented and they must be evaluated at every catheter change

CHCP have a patient group directive for CMS use (saline 0.9% flush) for blood clot retention only

Intermittent catheters (ISC)

- These are suitable for patients with incomplete bladder emptying e.g. neurogenic bladder disorders, particularly patients with multiple sclerosis, spina bifida, diabetes and spinal cord injury. Patient needs good dexterity and cognitive ability.
- These catheters are for single use only. .
- Help to reduce catheter-associated urinary tract infections (CAUTI) – classed as Gold standard by NICE.
- How many a patient uses a day depends on their medical reason & post void residual amount. Use can range from 1 to a usually maximum of 7 times daily. Refer / liaise with Bladder and Bowel Health Practitioners regarding over use.
- All patients should be managed by the Bladder and Bowel Health Service team.

The below products may not be suitable for all patients therefore the Bladder and Bowel Practitioners will request the most suitable alternative product for the patient and justify the reason

Order code	Product	Gauge/C H	Unit price	Notes
------------	---------	-----------	------------	-------

Female length catheters				
228010E	Actreen Mini Female (B.Braun Medica)l	10	£44.31 Box of 30	9cm Pre-lubricated with glycerine for smooth insertion and removal Quantity supplied to the patient needs to be stipulated by the clinician at the start of treatment.
228012E		12		
228014E		14		
WHF10	Curan Advantage Lady (CliniMed)	10	£39.00 Box of 30	14cm Hydrophilic catheter with integrated water sachet Quantity supplied to the patient needs to be stipulated by the clinician at the start of treatment.
WHF12		12		
WHF14		14		
CL10	Curan Lady Female (Clinimed)	10	£42.39 Per pack of 30	9.5cm Gel compartment to provide smooth coating with no mess Quantity supplied to the patient needs to be stipulated by the clinician at the start of treatment.
CL12		12		
CL14		14		
28580	Speedicath Compact (Coloplast)	10	£47.10 Per pack of 30	7cm length Low friction catheter in saline with easy-grip handle Quantity supplied to the patient needs to be stipulated by the clinician at the start of treatment.
28582		12		
28584		14		
4161025	LoFric Sense (Wellspect HealthCare)	10	£48.12 per pack of 30	10 cm length Low friction catheter in saline with easy-grip handle Quantity supplied to the patient needs to be stipulated by the clinician at the start of treatment.
4161225		12		
4161425		14		
Female length closed drainage Intermittent Catheters with integral collection bag				

239010E	Actreen Mini Set Female (B.Braun Medical)	10	£70 Box of 30	9cm Pre-lubricated with glycerine for smooth insertion and removal Closed drainage system with a 750ml drainage bag, Used for patients with poor balance Quantity supplied to the patient needs to be stipulated by the clinician at the start of treatment.
239012E		12		
239014E		14		
226310E	Actreen Glys set (B'Braun)	10	£62.70 Per box of 30	25cm length Glycerine coated catheter with 1litre integral bag (closed drainage system) Closed drainage system which must be used if a healthcare professional is performing Intermittent catheterisation on a patient Quantity supplied to the patient needs to be stipulated by the clinician at the start of treatment
226312E		12		
226314E		14		
4231025	Lofric Hydrokit (Wellspect)	10		20cm length Hydrophilic catheter with salt solution Non-touch technique promotes hygiene Loops are easy to use, even with poor hand function The quantity supplied to the patient needs to be stipulated by the clinician at the start of treatment.
4231225		12		
4231425		14		
Intermittent catheters (ISC) UNISEX length				
WHU10	Curan Advantage UNISEX (CliniMed)	10	£39.00 Box of 30	30cm length UNISEX Hydrophilic catheter with integrated water sachet Blue gripper to assist insertion and promotes non-touch technique The Quantity supplied to the patient needs to be stipulated by the clinician at the start of treatment.
WHU12		12		
WHU14		14		

			Partners in improving local health	
Intermittent catheters (ISC) - Male length catheters				
WHM10	Curan Advantage (CliniMed)	10	£39.00 per box of 30	42cm length Hydrophilic catheter with integrated water sachet The Quantity supplied to the patient needs to be stipulated by the clinician at the start of treatment.
WHM12		12		
WHM14		14		
630010	Liquick Base (Teleflex)	10	£85.24 per box of 60 (£42.62 for 30)	40cm length integrated pouch with sterile saline solution Ergothan tip allows gentle passage through the urethra, 2 eye lets which are staggered.
630012		12		
630014		14		
CM12	Curan man (CliniMed)	12	£45.90 Per box of 30	30cm length gel compartment to provide smooth coating with no mess Blue grip to assist insertion & promotes non-touch technique The Quantity supplied to the patient needs to be stipulated by the clinician at the start of treatment.
CM14		14		
Male length closed drainage intermittent catheters – integral collection bag				
4201025	Lofric Hydrokit (Wellspect)	10	£38.18 Per box of 20	40cm length Hydrophilic catheter with salt solution Non-touch technique promotes hygiene
4201225		12		

4201425		14		<p>Loops are easy to use, even with poor hand function</p> <p>The quantity supplied to the patient needs to be stipulated by the clinician at the start of treatment</p>
226212E	Actreen Glyc Set (B'Braun)	12	£62.70	<p>50cm length Glycerine coated catheter with 1litre integral bag</p> <p>Closed drainage system which must be used if a healthcare professional is performing Intermittent catheterisation on a patient</p> <p>The quantity supplied to the patient needs to be stipulated by the clinician at the start of treatment.</p>
2262E		14	Box of 30	

Urinary sheaths – Over ordering more than one box of thirty per month may indicate poor fit - refer to Bladder & Bowel Health team for advice






Order code	Product	Volume	Unit price	Quantity	Use
GBLSS24	Great Bear Libra Sheath Standard	24mm	£47.47 for 1 box of 30	1 box of 30 per month	<p>Self-adhesive silicone sheaths</p> <p>Can offer a valuable alternative method of urinary incontinence management for men.</p> <p>It is important to accurately assess for type, size & length of sheath using manufacturers measuring device.</p> <p>It is recommended that sheaths are changed on a daily basis.</p> <p>It may be necessary to use a fixation strip to ensure the sheath remains in place.</p>
GBLSS28		28mm			
GBLSS31		31mm			
GBLSS35		35mm			
GBLSS40		40mm			
GBLSP24	Great Bear Libra Sheath Pop-on	24mm	£47.47 for 1 box of 30		
GBLSP28		28mm			

GBLSP31		31mm	Partners in improving local health	Please ensure an adhesive remover spray is used if unable to bath/shower daily to prevent skin stripping on sheath removal.
GBLSP35		35mm		
GBLSP40		40mm		
GBLSW24	Great Bear Libra Sheath Wide Band	24mm	£47.47 for 1 box of 30	
GBLSW28		28mm		
GBLSW31		31mm		
GBLSW35		35mm		
GBLSW40		40mm		
5243	Clear advantage spirit standard 80mm length (Bard)	24mm	£51.47 per box of 30	
5283		28mm		
5323		32mm		
5363		36mm		
5403		40mm		

Urinary sheaths continued				
Order code	Product	Pack Size	Unit price	Use
7243	Clear advantage spirit pop-on 38mm length (Bard)	24mm	£51.47 per box of 30	<p>Self-adhesive silicone sheaths</p> <p>Can offer a valuable alternative method of urinary incontinence management for men.</p> <p>It is important to accurately assess for type, size & length of sheath using manufacturers measuring device.</p> <p>It is recommended that sheaths are changed on a daily basis.</p>
7283		28mm		
7323		32mm		
7363		36mm		
7403		40mm		
9243	Clear advantage spirit wide band 80mm length (Bard)	24mm	£51.47 per box of 30	<p>It may be necessary to use a fixation strip to ensure the sheath remains in place.</p> <p>Please ensure an adhesive remover spray is used if unable to bath/shower daily to prevent skin stripping on sheath removal.</p>
9283		28mm		
9323		32mm		
9363		36mm		
9403		40mm		
1243	Clear Advantage with Aloe Standard 80mm length (Bard)	24mm	£51.87	<p>Non sterile - Use only for patients with sensitive skin</p> <p>Self-adhesive silicone sheaths</p> <p>Can offer a valuable alternative method of urinary incontinence management for men.</p> <p>It is important to accurately assess for type, size & length of sheath using manufacturers measuring device.</p> <p>It is recommended that sheaths are changed on a daily basis.</p>
1283		28mm		
1323		32mm		
1363		36mm		
1403		40mm		
2243	Clear Advantage with Aloe Pop on 38mm length (Bard)	24mm	£51.87	<p>None sterile – use for sensitive skin only</p> <p>Pop on will fit all sizes of penis, particularly suitable if the penis is retracted at rest</p>
2283		28mm		
2323		32mm		
2363		36mm		
2403		40mm		
3243	Clear Advantage with Aloe Wide band 80mm length	24mm	£51.87	<p>Non sterile – use for sensitive skin only</p> <p>Very secure adhesion</p>
3283		28mm		

3323	(Bard)	32mm	Suitable for males who are particularly active or have difficulty in keeping the sheath in place
3363		36mm	
3403		40mm	

Sheath accessories			
Order code	Product	Pack Size	Unit price
10380A	GB soft skin adhesive remover	50ml aerosol £9.32	Order singly (only one per year as per recommendation from manufacturers)
62042	Coloplast prep wipes	£10.81 for 51	One per day

Urinals (Beambridge) May be used for patients who have functional incontinence, urinals should be part of the patients treatment or management plan				
Order code	Product		Pack Size	Unit price
6-18T	Bridge Urinal with Tap – Female (Beambridge)		1	£14.55
6-45	Lady jug (Beambridge)		1	£15.65
6-50T	Male draining jug with tap (Beambridge)		1	£14.55
6 – 35 6 - 37	Male Funnel Large 220mm long x 48mm diameter. Short 150mm long x 40mm diameter.		1	£13.44
00-1200	F4 drainable 2L night bag T-Tap	All above Beambridge products will require 2L drainable night bag Flexicare	Pack of 10 Each bag wash & reuse for 5 days	£9.67
6-26	Saddle Urinal Does not attach to a night bag (Beambridge)		1	£14.55

Appendix Three: Abbreviations

Abbreviation	Definitions
HCP	Healthcare professional
AUR	Appliance Use Review
DAC	Dispensing Appliance Contractor
ISC	Intermittent Self Catheterisation
EPS	Electronic Prescription Service
CMS	Catheter Maintenance solutions
CAUTI	Catheter associated urinary tract infection
ANTT	Aseptic non-touch technique